

NEMD crafts marine-themed structure for Coastal

By Kevin Shalvey

PBN Staff Writer

EAST PROVIDENCE – New England Medical Design Architects Inc. has announced the completion of a medical office building at 900 Warren Ave., which it designed for Coastal Medical Inc.

“Our building idea stemmed from motion, based on the owners’ business name: Coastal Medical Group,” NEMD President Mehdi Khosrovani said of the 50,000-square-foot project. “Keeping with that theme, we created a design that resembles a sailboat – to embrace the busy flow of traffic around the building site, including the view of I-195.”

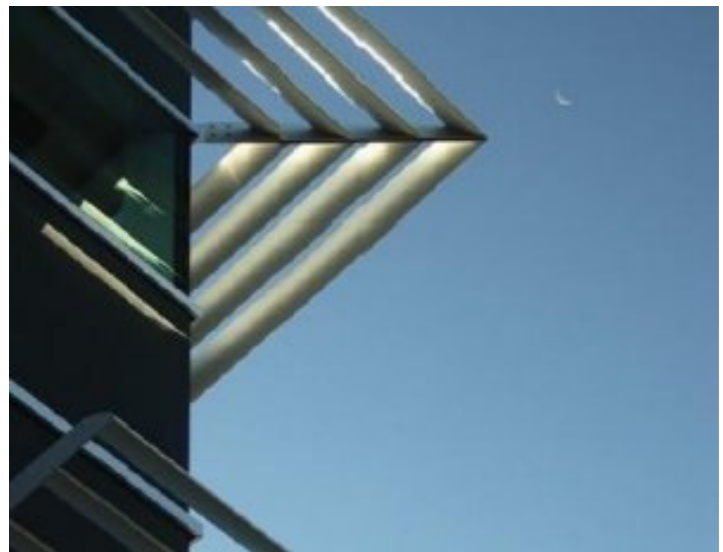
The building’s exterior is “organized around the play between two distinct material palettes: curtain wall with stone and brick with strip windows,” according to NEMD. The combination “minimized the scale of the building by dividing each façade in two,” the architects said.

NEMD has completed hundreds of projects, from Maine to Florida, including work at many major medical centers. It was honored this year with the Real Estate and Construction Review’s Building of America Plaque of Honor.

Coastal describes the building, in a statement on its Web site, as “a state-of-the-art facility replete with all the services necessary for the convenience of your patient.” The state’s largest private group practice, it has nearly 90 physicians at 16 locations, caring for more than 150,000 patients.



COURTESY NEW ENGLAND MEDICAL DESIGN ARCHITECTS
THE EXTERIOR is “organized around the play between two distinct material palettes: curtain wall with stone and brick with strip windows,” to help minimize the scale of the 50,000-square-foot structure “by dividing each façade in two,” the architects said.



COURTESY NEW ENGLAND MEDICAL DESIGN ARCHITECTS
“WE CREATED a design that resembles a sailboat – to embrace the busy flow of traffic around the building site, including the view of I-195,” Mehdi Khosrovani, NEMD’s president, said of the Warren Avenue project.

New England Medical Design Architects Inc., based in the Rumford section of East Providence, focuses on the design and construction of complex facilities. For more information, visit www.nemd.com.

Coastal Medical Inc. is based in Davol Square, Providence. For more information, visit www.coastaldocs.com.

Article printed from source <http://www.pbn.com/stories/31334.htm>